

【 JR EAST PASS 】

✓ Terms and Conditions for Purchase and Use

Available only to foreign nationals with a non-Japanese passport who enter Japan under the entry status of Temporary Visitor valid for 90 days or less

✓ How to Purchase

1. For sale in Japan only - Purchase at sales locations in Japan
2. For sale outside of Japan - Purchase an e-ticket from an overseas travel agency or JR East website and exchange it for a pass at an exchange location in Japan

Notes

*At the time of purchase or exchange, you will be asked to show your passport, so please make sure to have it with you.

*Before you purchase the pass, please check what areas it covers.

*Once purchased, the pass cannot be changed to another type later.

tripguide.tokyo

JR EAST PASS 3 Ways to Purchase

1 At an overseas travel agency



You can purchase an Exchange Order before coming to Japan. After arrival in Japan, please exchange it for the pass.

OR

2 On the website



www.eastjapanrail.com

You can purchase an e-ticket online. After arrival in Japan, please exchange it for the pass.

OR

3 In Japan



You can purchase the pass at a sales location.

Exchange to/Purchase of the Pass

JR EAST Travel
Service Center

Travel Service
Center (View Plaza)

JR Ticket Office

Please see the inside for exchange/sales locations.

NOW ENJOY YOUR TRIP!



JR-EAST Train Reservation

Seats of Shinkansen and main limited express trains within the unlimited-ride area can be booked online.



<http://www.eki-net.com/pc/jreast-shinkansen-reservation/English/wb/common/Menu/Menu.aspx>

JR-EAST Train Reservation

Search

JR East
InfoLine

Useful information, such as train schedules, the shortest routes to your destination and the location of JR Ticket Offices at each station, is available in English, Korean and Chinese.

TEL. 050-2016-1603 Office Hours 10:00 - 18:00 (except during the year-end/new year holidays)

*The phone number listed to the left is not a booking line.

This information is current as of March 2019. [03/2019]

英語

Japan.
Endless
Discovery.

JR
JR-EAST

JR EAST PASS

Travel and discover!

Unlimited rides on all Shinkansen and other JR trains in the "unlimited-ride area"! Enjoy a memorable trip with the top value, flexible JR EAST PASS! Starting in June 2018, JR buses within the area can be ridden!

Tohoku
area

Hayabusa (E5)



Komachi (E6)



Tsubasa (E3)



Nagano,
Niigata
area

Max Toki (E4)



Ragayaki (E7)



Tohoku area

www.jreast.co.jp/e/eastpass_t/

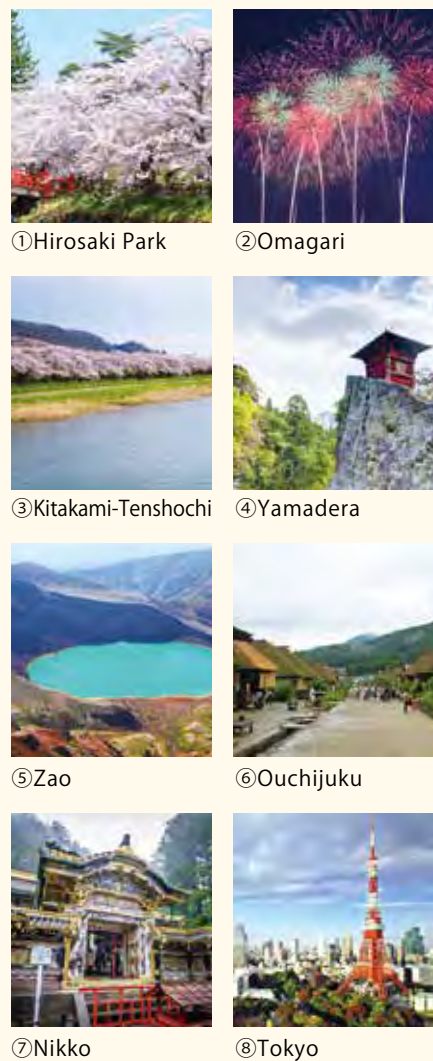


Nagano, Niigata area

www.jreast.co.jp/e/eastpass_n/

JR EAST PASS (Tohoku area)

Blessed with magnificent mountains and beautiful lakes, and surrounded on three sides by the sea, the Tohoku region offers magnificent nature, traditional Japanese culture and delicious food. Tohoku is where you will find your favorite Japanese experience!



Valid period	Your choice of any five days within a 14-day period from the day when the pass is issued (flexible five-day)		
Sales Prices		Adults (12 years of age or older)	Children (between 6 and 11 years of age)
For sale outside of Japan		19,000yen	9,500yen
For sale in Japan only		20,000yen	10,000yen

Boarding zone

This pass allows unlimited rides using reserved seats on the ordinary cars of the limited express trains (including Shinkansen), express trains, and local trains on JR East train lines (including BRT), all the Izu Kyuko lines, all the Tokyo Monorail lines, all the Aomori Railway lines, all the Iwate Galaxy Railway (IGR) lines, Sendai Airport Transit lines, and JR Bus Tohoku as well as JR Bus Kanto buses (excluding expressway bus routes and some other bus routes) within the unlimited-ride area. In addition, the pass also allows unlimited rides using reserved seats on the ordinary cars of the limited express trains such as the Tobu Direct Limited Express "Nikko", "Kinugawa" and "SPACIA Kinugawa" trains.

*1) Multiple passes can be purchased providing the valid periods (14 days) do not overlap. *2) The pass is not valid for limited express trains that arrive at and depart from the Tobu line stations. *3) GALA Yuzawa Station is open only during winter and spring.

Exchange and Sales Offices

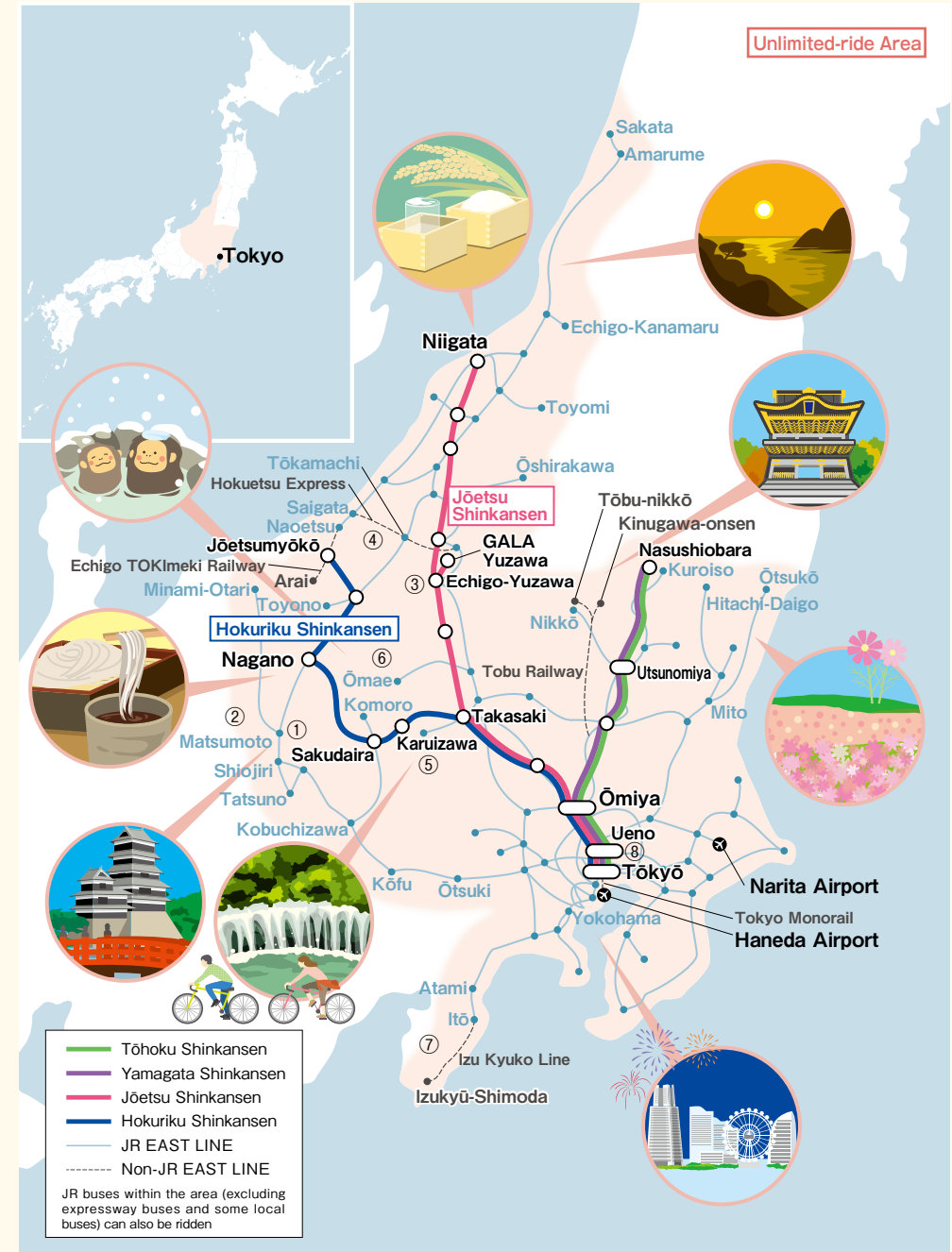
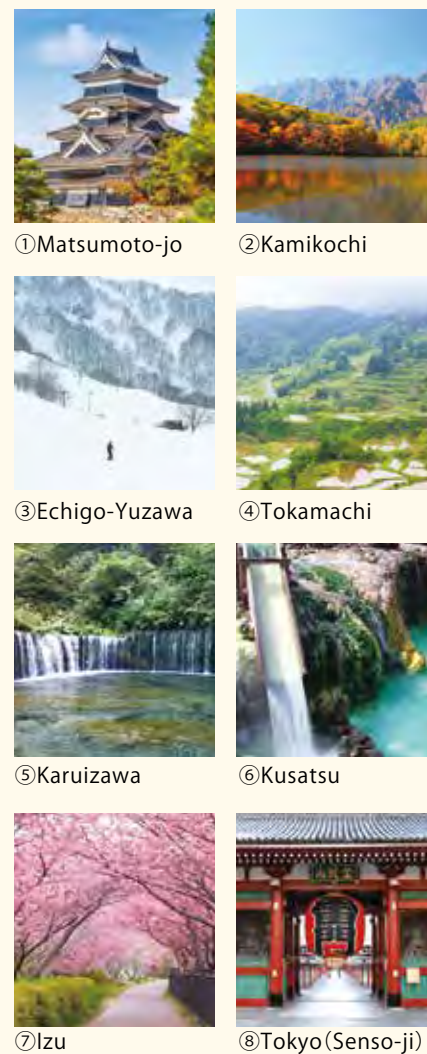
Station	Office	Station	Office
Narita Airport Terminal 1	JR EAST Travel Service Center Narita International Airport Terminal 1 Travel Center	Shibuya	JR EAST Travel Service Center
Narita Airport Terminal 2・3	JR EAST Travel Service Center	Ikebukuro	JR EAST Travel Service Center
Haneda Airport International Terminal (Tokyo Monorail)	JR EAST Travel Service Center	Hamamatsuchō	JR EAST Travel Service Center
Tōkyō	JR EAST Travel Service Center	Sendai	JR EAST Travel Service Center
Ueno	JR EAST Travel Service Center	Sendai Airport	Michinoku Tour Information (Sendai Airport Passenger Terminal 1st Floor)
Shinjuku	JR EAST Travel Service Center		

Other Travel Service Centers (View Plaza) and JR East Information Centers at major stations such as Aomori, Hachinohe, Akita, Morioka, Yamagata, Fukushima, Mito, Shinagawa and Yokohama.

* Exchanges and sales are only handled during business hours. Please check the website for details on business days and hours. http://www.jreast.co.jp/e/eastpass_t/
* Exchange and Sales Offices may be subject to change.

JR EAST PASS (Nagano, Niigata area)

If you want to make the most of your trip in Eastern Japan, we recommend a visit to the Nagano and Niigata areas. Both are relatively close to Tokyo and offer a wide variety of sightseeing spots, including leisure facilities such as hot springs and ski resorts – all surrounded by stunning views.



Valid period	Your choice of any five days within a 14-day period from the day when the pass is issued (flexible five-day)		
Sales Prices		Adults (12 years of age or older)	Children (between 6 and 11 years of age)
For sale outside of Japan		17,000yen	8,500yen
For sale in Japan only		18,000yen	9,000yen

Boarding zone

This pass allows unlimited rides using reserved seats on the ordinary cars of the limited express trains (including Shinkansen), express trains, and local trains on JR East train lines, all the Izu Kyuko lines, all the Tokyo Monorail lines, all the Hokuetsu Express lines, the Echigo TOKImeki Railway line (between Naoetsu and Arai), and JR Bus Kanto buses (excluding expressway bus routes and some other bus routes) within the unlimited-ride area. In addition, the pass also allows unlimited rides using reserved seats on the ordinary cars of the limited express trains such as the Tobu Direct Limited Express "Nikko", "Kinugawa" and "SPACIA Kinugawa" trains.

*1) Multiple passes can be purchased providing the valid periods (14 days) do not overlap. *2) The pass is not valid for the Hayabusa and Komachi Shinkansen trains. *3) The pass is not valid for limited express trains that arrive at and depart from the Tobu line stations. *4) GALA Yuzawa Station is open only during winter and spring.

Exchange and Sales Offices

Station	Office	Station	Office
Narita Airport Terminal 1	JR EAST Travel Service Center Narita International Airport Terminal 1 Travel Center	Shinjuku	JR EAST Travel Service Center
Narita Airport Terminal 2・3	JR EAST Travel Service Center	Shibuya	JR EAST Travel Service Center
Haneda Airport International Terminal (Tokyo Monorail)	JR EAST Travel Service Center	Ikebukuro	JR EAST Travel Service Center
Tōkyō	JR EAST Travel Service Center	Hamamatsuchō	JR EAST Travel Service Center
Ueno	JR EAST Travel Service Center		

Other Travel Service Centers (View Plaza) and JR East Information Centers at major stations such as Niigata, Nagano, Mito, Shinagawa and Yokohama.

* Exchanges and sales are only handled during business hours. Please check the website for details on business days and hours. http://www.jreast.co.jp/e/eastpass_n/
* Exchange and Sales Offices may be subject to change.